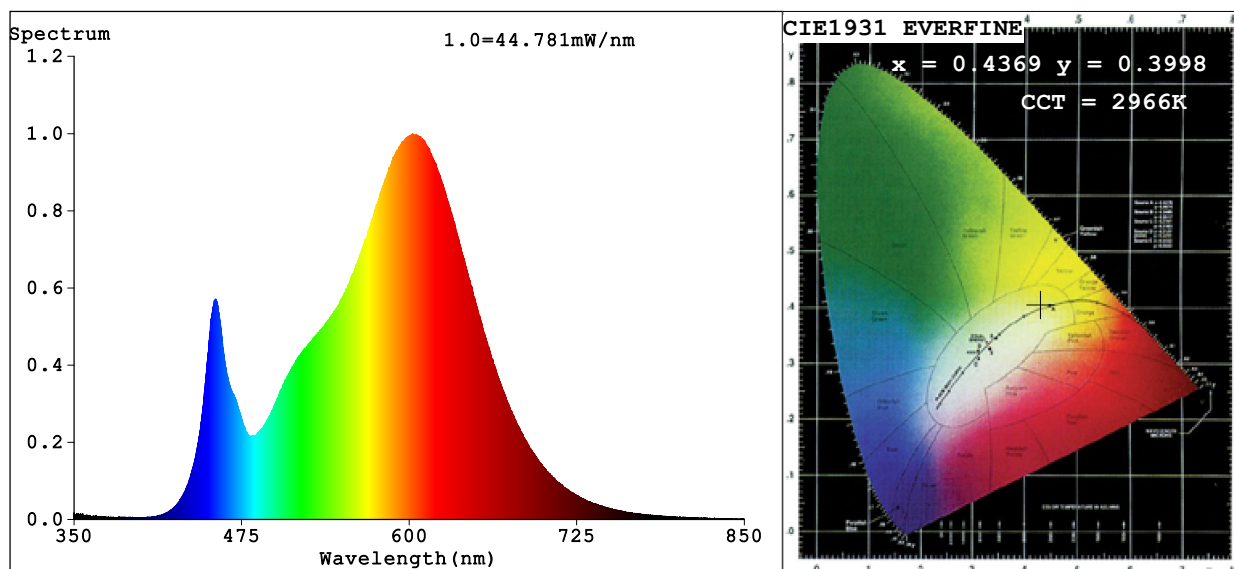


Spectrum Test Report



Color Parameters:

Chromaticity Coordinate: $x=0.4369$ $y=0.3998$ $u'=0.2524$ $v'=0.5197$

CCT=2966K (Duv=-0.0017) Dominant WL:Ld =583.6nm Purity=51.1%

Ratio:R=23.2% G=74.0% B=2.8%; Peak WL:Lp=602.5nm FWHM=118.0nm

Render Index:Ra=82.0 CRI=76.9 TM30:Rf=81 Rg=95

R1 =81 R2 =93 R3 =94 R4 =79 R5 =82 R6 =92 R7 =80

R8 =56 R9 =4 R10=84 R11=78 R12=73 R13=84 R14=97 R15=73

Photo Parameters:

Flux = 2128 lm Eff. : 108.08 lm/W Fe = 6.486 W

Electrical parameters:

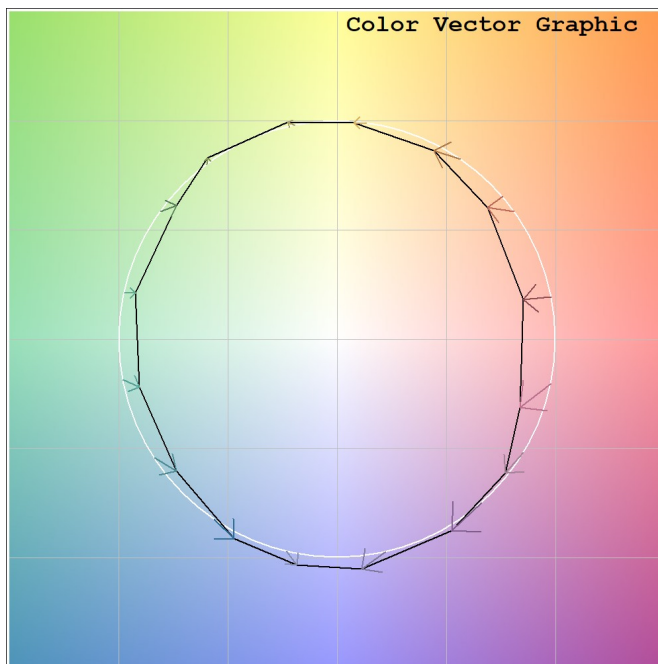
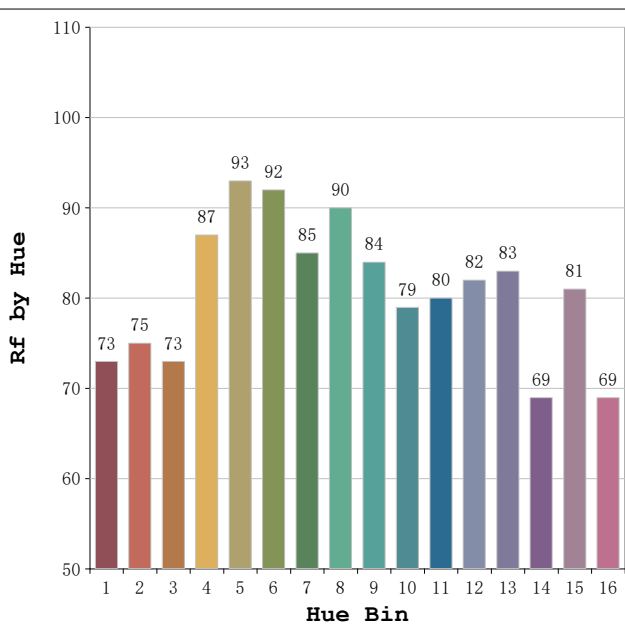
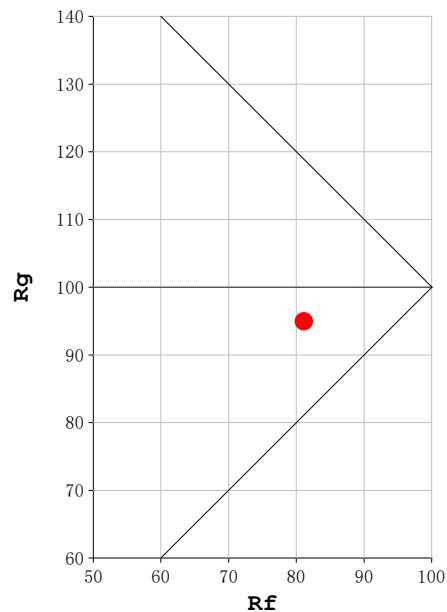
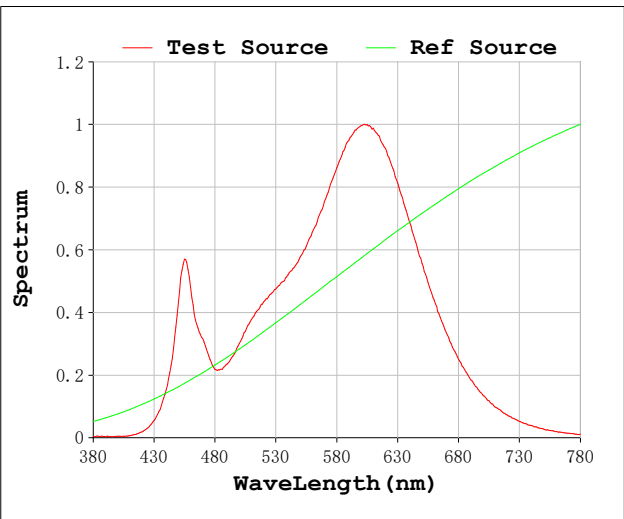
V = 23.998 V I = 0.8204 A P = 19.69 W PF = 1.000

Status: Integral T = 549 ms Ip = 49020 (75%)

Model:Ecoled Roll to roll
Tester:Sergio Carneros
Temperature:20Deg
Manufacturer:Luz Negra

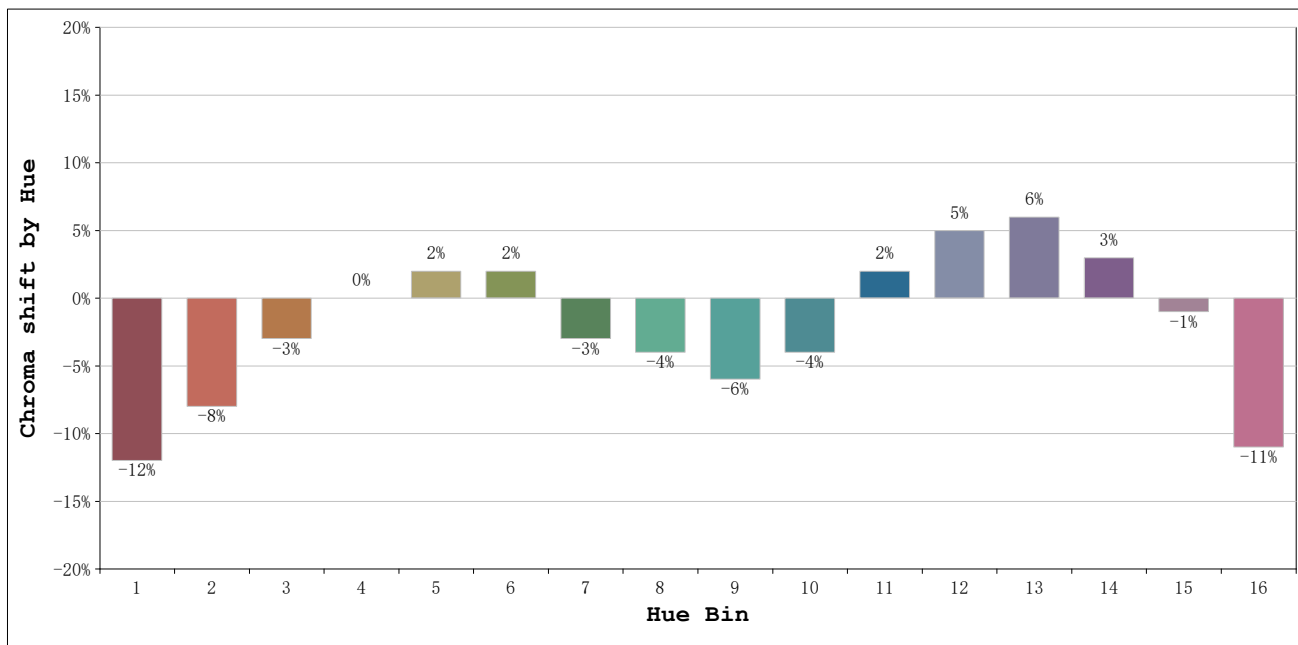
Number: 31.259
Date:2025-06-16 16:04:58
Humidity:50%
Remarks:100cm de tira flexible

Rf: 81 **CCT: 2966 K** **u': 0.2524**
Rg: 95 **Duv: -0.0017** **v': 0.5197**



Model:Ecoled Roll to roll
 Tester:Sergio Carneros
 Temperature:20Deg
 Manufacturer:Luz Negra

Number: 31.259
 Date:2025-06-16 16:04:58
 Humidity:50%
 Remarks:100cm de tira flexible



			Graphic shift(%)	
Hue Bin	Hue Angle	Rf	Chroma	Hue
1	0.0° - 22.5°	73	-12	1
2	22.5° - 45.0°	75	-8	8
3	45.0° - 67.5°	73	-3	12
4	67.5° - 90.0°	87	0	6
5	90.0° - 112.5°	93	2	3
6	112.5° - 135.0°	92	2	-1
7	135.0° - 157.5°	85	-3	-5
8	157.5° - 180.0°	90	-4	0
9	180.0° - 202.5°	84	-6	5
10	202.5° - 225.0°	79	-4	11
11	225.0° - 247.5°	80	2	12
12	247.5° - 270.0°	82	5	6
13	270.0° - 292.5°	83	6	-11
14	292.5° - 315.0°	69	3	-18
15	315.0° - 337.5°	81	-1	-12
16	337.5° - 360.0°	69	-11	-12

Model:Ecoled Roll to roll
 Tester:Sergio Carneros
 Temperature:20Deg
 Manufacturer:Luz Negra

Number: 31.259
 Date:2025-06-16 16:04:58
 Humidity:50%
 Remarks:100cm de tira flexible